

Report on COVID-19 Emergency Response for Berkshire County

August 2020

#HereForGood



Berkshire United Way

Berkshire Taconic
COMMUNITY FOUNDATION

IN PARTNERSHIP WITH



Northern Berkshire United Way



Summary & Timeline

Berkshire United Way and Berkshire Taconic Community Foundation (BTCF), in partnership with Northern Berkshire United Way and Williamstown Community Chest, launched the COVID-19 Emergency Response Fund for Berkshire County to provide flexible resources to nonprofits working with communities disproportionately affected by the coronavirus and the economic consequences.

Berkshire United Way and Berkshire Taconic Community Foundation come together to respond to COVID-19 community needs.

Massachusetts COVID-19 Relief Fund awards its first grants to Berkshire nonprofits.

Berkshire County COVID-19 Fund reaches more than \$2.1M. Additional funding from BTCF's N2N Fund & MA COVID-19 Relief Fund brings total to date to more than \$3.3M.

March 16



March 17-20



April 24



June 25 & 30



July 22



August 3



With support from Berkshire County funders and partners, the COVID-19 Emergency Response Fund for Berkshire County launches and an RFP document and review team are established. First round of grants is distributed March 20.

Berkshire County COVID-19 Fund pauses grantmaking on June 25 (a total of 129 grants distributed to date). BTCF's Neighbor-to-Neighbor Fund pauses on June 30 after fourth round of grants.

To date, the three funds together distribute more than \$3M through 186 grants to 99 organizations.

Berkshire County COVID-19 Emergency Response Dashboard



\$3,291,144

Total Funds Raised



\$3,019,282

Total Funds Distributed

75,000+

Lives Impacted



\$2,102,951

Berkshire County
COVID-19 Fund

\$435,711

BTCF Neighbor-to-Neighbor

\$752,482

MA COVID-19 Relief Fund

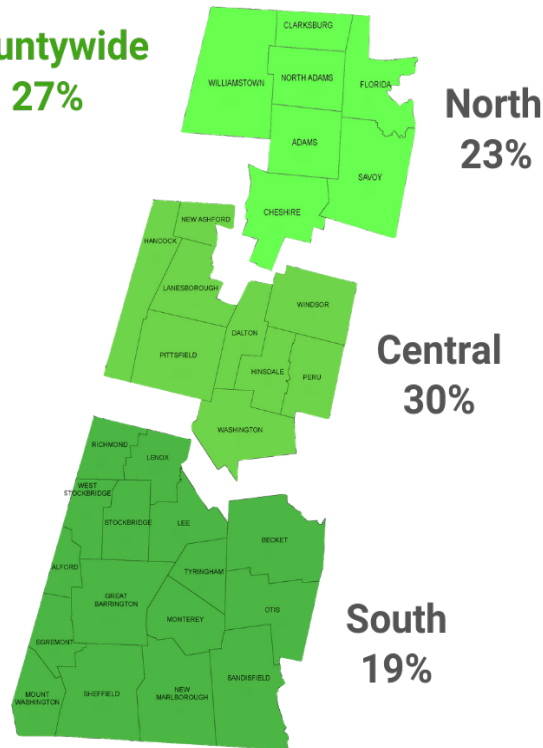


600+ donors

Comprised of individuals, corporations,
foundations and BTCF fundholders

Grants by geography

Countywide
27%



Food



Health & Mental Health



Emergency Child Care &
Youth Services



Housing & Homeless

*Distribution and impact estimates based
on grantee reporting as of July 31



Food

Adams Council on Aging *
 Al Nelson Friendship Center Food Pantry
 Berkshire Community Action Council *
 Berkshire Community College Foundation ****
 Berkshire Community Diaper Project
 Berkshire Dream Center
 Berkshire Food Collaborative Project
 Berkshire Food Project +
 Berkshire Grown +
 Berkshire Helping Hands
 Berkshire Hills Regional School District
 Berkshire Immigrant Center **
 Berkshire South Regional Community Center +
 Berkshire Tomorrow +
 Boys & Girls Club of the Berkshires
 BRIDGE +
 Central Berkshire Regional School District
 CBRSD Weekend Backpack Program
 Chabad of the Berkshires
 Cheshire Food Pantry
 Christ Trinity Church
 Christian Center
 Community Food Pantry at South Congregational Church
 Dalton Council on Aging
 Elder Services of Berkshire County *
 Elizabeth Freeman Center
 Farmington River Regional School District
 Food Bank of Western Massachusetts +
 Goodwill Industries of the Berkshires and Southern Vermont
 Great Barrington Farmers' Market
 Greenagers
 Hinsdale Food Pantry
 It Takes a Village
 Manos Unidas
 North Adams Farmers Market
 Northern Berkshire Community Coalition
 Our Lady of Charity
 The People's Pantry
 Pittsfield Public Schools
 Price Memorial AME Zion Church
 Richmond Consolidated Schools
 Rites of Passage and Empowerment (R.O.P.E.)
 Roots Rising +
 ROOTS Teen Center
 Salvation Army
 Southern Berkshire Regional School District
 Town of Williamstown/Farmers Market
 Town of Windsor
 Western Mass Labor Action
 Williamstown Food Pantry



Emergency Child Care & Youth Services

18 Degrees **
 Arts in Recovery
 Barrington Stage Company
 Berkshire County Head Start
 Berkshire Family YMCA
 Berkshire South Regional Community Center +
 Boys & Girls Club of the Berkshires
 BRIDGE +
 Child Care of the Berkshires +
 Child Development and Education, Inc.
 Community Legal Aid
 Dalton Community Recreation Association *
 Gladys Allen Brigham Community Center +
 Kids Arts Production
 Lee Youth Association +
 MassHire Berkshire Career Center
 Railroad Street Youth Project
 Rites of Passage and Empowerment (R.O.P.E.)
 ROOTS Teen Center
 Youth Center Inc. (Adams)



Health & Mental Health

Berkshire County Arc
 Berkshire Family & Individual Resources (BFAIR)
 Berkshire Health Systems – Berkshire Medical Center
 Berkshire Health Systems – Cancer Center **
 Berkshire Health Systems – Macony Pediatrics **
 Berkshire Hills Regional School District
 Berkshire HorseWorks
 Berkshire Nursing Families
 Berkshire Sewing Team
 BRIDGE +
 The Brien Center +
 Central Berkshire Command Center
 Community Bible Church
 Community Health Programs **
 Ecu-Health Care
 Kripalu Center for Yoga & Health
 Mass 2-1-1
 Mount Carmel Care Center
 NAMI Berkshire County
 North County Emergency Planning Commission
 Northern Berkshire EMS
 UCP of Western Massachusetts
 Volunteers in Medicine Berkshires **
 Western Mass Recovery Learning Community

* Jointly funded through Neighbor-to-Neighbor Fund

** Funded by the Neighbor-to-Neighbor Fund

+ Jointly funded through MA COVID-19 Relief Fund

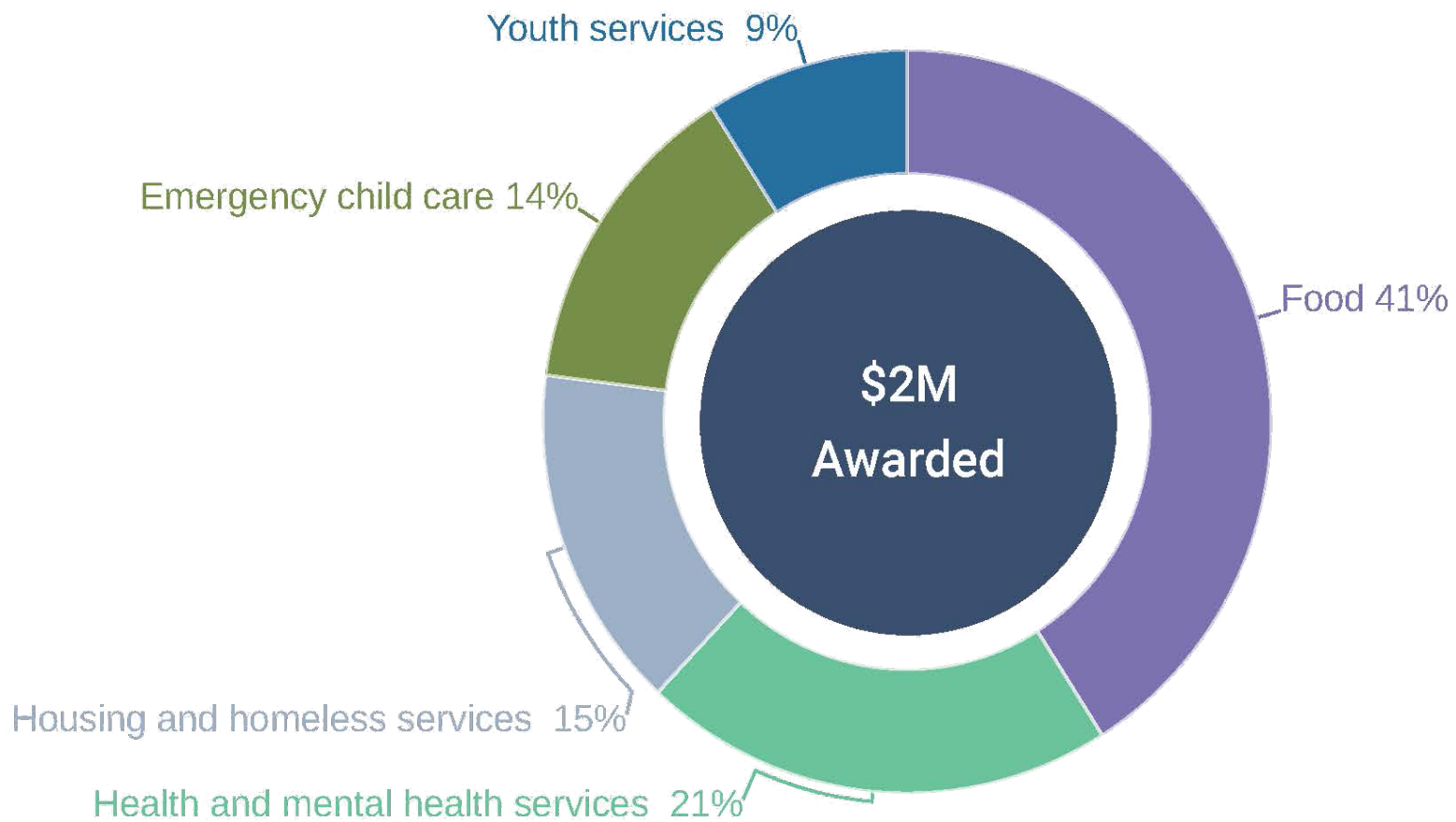
++ Funded by the MA COVID-19 Relief Fund



Housing & Homeless

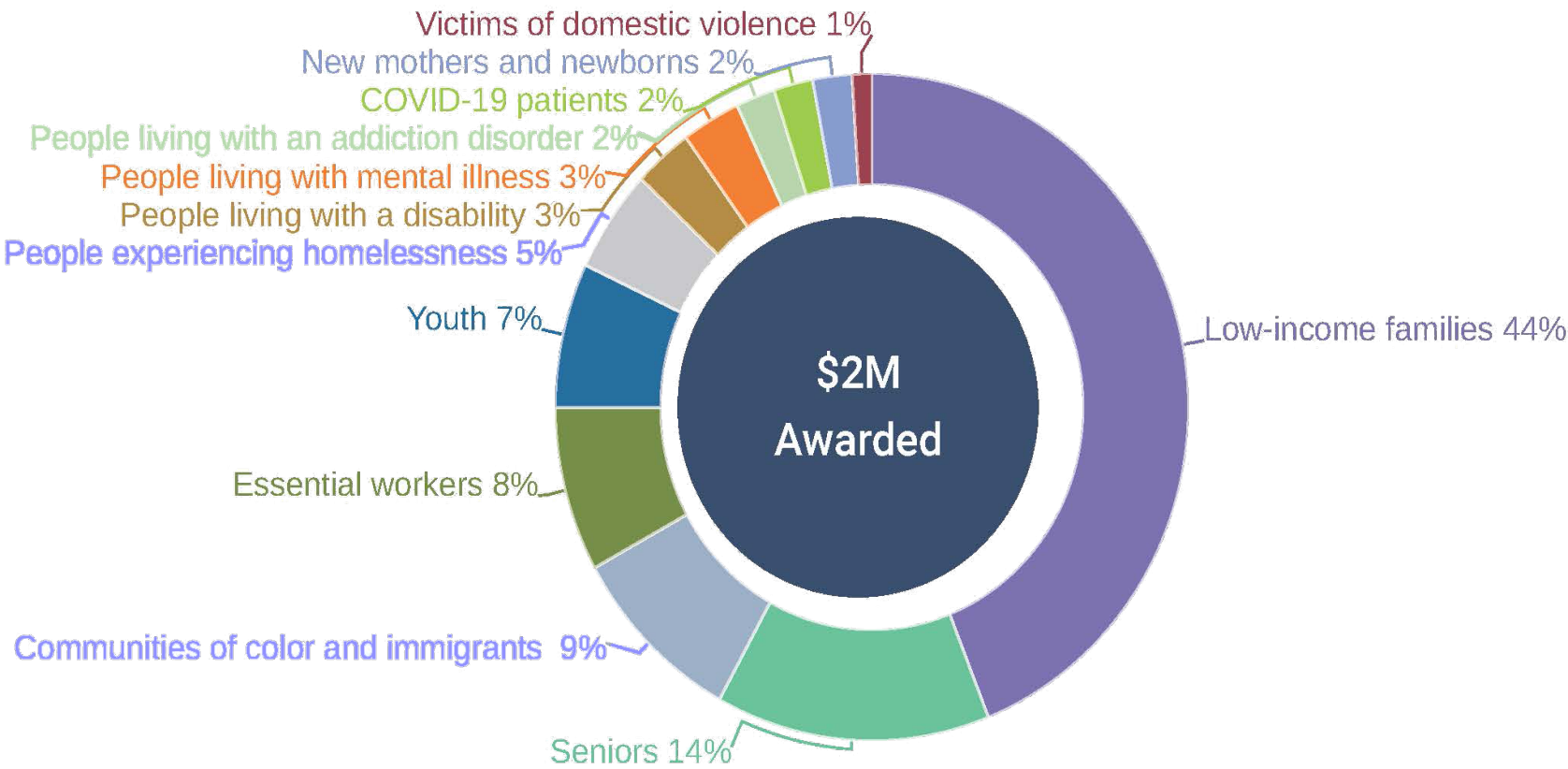
Berkshire Bridges Working Cities
 Berkshire Center for Justice
 Berkshire Housing Development Corporation & Berkshire Housing Service **
 Cathedral of the Beloved
 Central Berkshire Habitat for Humanity **
 Construct +
 Iglesia Castillo Fuerte
 Josh Bresette Commit to Save a Life Committee
 South Berkshire Emergency Response Center & Fairview Hospital
 Louison House
 ServiceNet
 Soldier On

BERKSHIRE COUNTY EMERGENCY RESPONSE FUND GRANTS BY SERVICES PROVIDED



Services are not mutually exclusive

BERKSHIRE COUNTY EMERGENCY RESPONSE FUND GRANTS BY SUB-POPULATION



Sub-populations are not mutually exclusive

From the Frontlines

We are providing funding primarily in the service area of food, with significant support offered for health and mental health services, housing and homeless services, and emergency child care and youth services. Here are a few examples of how the funds are helping the community.

FOOD

The Hinsdale Food Pantry had been closed since spring 2019. When the pandemic hit, volunteers opened a mobile pantry on April 9 in the parking lot of the Hinsdale Trading Company to respond to the increase in food insecurity.

With additional funding from the COVID-19 Emergency Response Fund, the food pantry is able to distribute bags of nutritional food to more than 100 residents of Hinsdale, Peru and Washington each week.

HOUSING

A grant from the COVID-19 Emergency Response Fund has allowed Fairview Hospital & Southern Berkshire Regional Emergency Planning to provide housing for health care workers during the pandemic.

A young mom and nurse travels to the Berkshires to work double shifts at a local residential facility. While she works, she leaves her infant daughter with her parents, who live locally, then stays overnight.

When she was assigned to care for patients with COVID-19, she slept in her car to protect her baby and mother, who is recovering from cancer. She was thrilled to learn she would be able to stay in a hotel room for free while she continues to work.

HEALTH & MENTAL HEALTH

Marianna was working full time at a local hotel/spa when she was laid off due to the pandemic. Her children live far away and are busy, causing her to feel alone and isolated.

She called the NAMI-Berkshire County Warm Line, which was established with support from the COVID-19 Emergency Response Fund. Marianna's primary language is Spanish, so the Warm Line connected her with a Spanish-speaking volunteer. They continue to talk weekly.

YOUTH SERVICES

ROOTS Teen Center in North Adams used a grant from the Fund to offer a culinary program, which filled to capacity and now has a waitlist, and a bicycle workshop to encourage youth to get outside while practicing social distancing.

The grant helped the Center provide 12 youth with a refurbished bicycle, helmet, lock and lights and offer a virtual 2-hour safety workshop and 2-hour maintenance workshop.

Both programs will serve a total of 24 youth.

Funding Partners

*\$25,000 and above



Amelia Peabody Charitable Fund



Berkshire Health Systems

www.berkshirehealthsystems.org

Berkshire
Taconic
Community
Foundation



Berkshire United Way



COMMONWEALTH
CHILDREN'S FUND



GENERAL DYNAMICS

THE GREEN
FOUNDATION



MILL TOWN

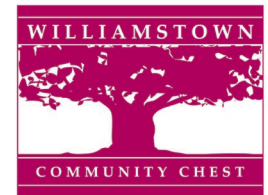


Northern Berkshire United Way



unistress

Williams



Anonymous (2); Callahan Dee Family Foundation; The Joyce and Fred Crane family's Cooper Meadow Fund*; Patty and Tim Crane Fund*; Fairbank Family Fund*; Jane & Jack Fitzpatrick Trust; Fuqua Family Fund*; The Gilson Family Foundation; The James & Robert Hardman Fund*; James and Irene Hunter Fund*; Jane Iredale*; Mary Pope Osborne; Donald C. McGraw Foundation/Black Rock Foundation Fund*; Joseph H. and Carol F. Reich Fund*

*Funds of Berkshire Taconic Community Foundation